

Sight glass level gauge PN40 / CL300 PN100 / CL600

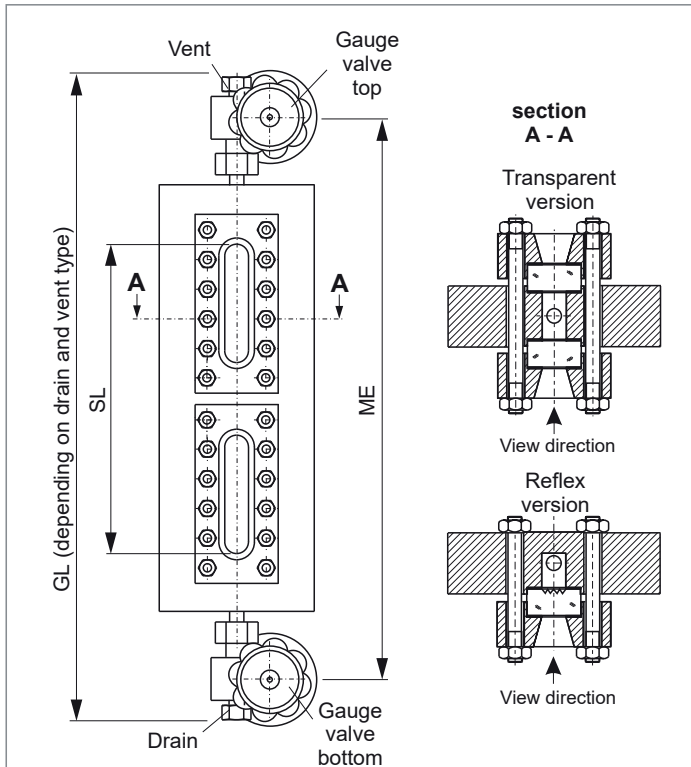
"Cold" High pressure, Reflex, Transparent,
Connection top-bottom pivoted
Connection gauge valve to gauge chamber: union
Offset, handwheel

Product group **700**

Type **53**

Sheet: 1 Revision: 4

Date: 04/22



Field of Application

Direct reading liquid level indicator for general applications up to PN100/CL600 (depends on glass type). Increased safety with ball check valves.

General Data

Visible length SL: <ME-180 mm
Body: 75x30, 80x40, 100x40, 120x40, 140x40
Connection gauge valve - body: union
Gauge valve types: see data sheet 760.53
Actuation: hand wheel
Material glass plates acc. to DIN 7081: Borosilicate
Material media wetted parts: CS, SS
Depending on delivery situation material can vary.
Types with special materials e. g. Hastelloy, Monel etc. are available.
Weight
- basic weight (glass type 4-11)
reflex / transparent: 21.0-27.0/24.0-32.0 kg
- per segment (glass type 4-11)
reflex / transparent: 7.9-15.6/10.4-19.8 kg
Depending on execution weight can vary.

Design Data

Design pressure/-temperature see derating
75x30, 80x40, 100x40,
120x40, 140x40: Datenblatt BG00R2-00RD

Further Data

Connection gauge valve - body: see 700.VAR
Process connection: see 700.VAR
Vent: see 700.VAR
Drain: see 700.VAR

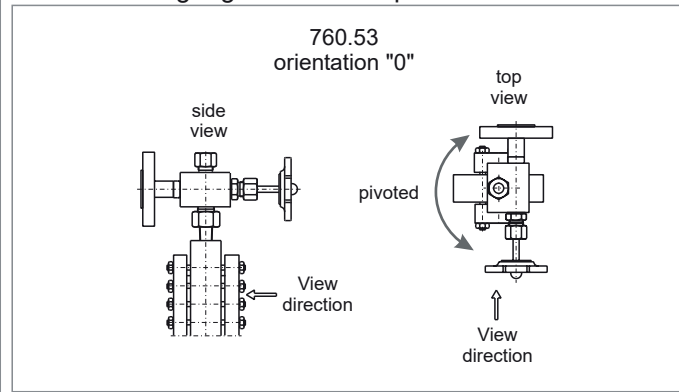
Accessories

Glass protection etc.: see accessories
Frosts protection: see accessories
Illumination: see accessories
Scale: see accessories
Heating: see accessories

CS (= carbon steel) and SS (= stainless steel type 316SS) are materials suitable for Pressure Vessels according to EN or ASME.

Subject to alterations

Orientation of gauge valve and operation



Ordering no.

7 0 0 5 3 X X 5 3 0 X X - X X - X X X X X X X X - X X X X		see 700.VAR	ME [mm]
bridging	without with	0 1	
glass window	Reflex (DIN 7081)	1	
	Transparent (DIN 7081)	2	
gauge valve	760.53	5 3 0	
			see data sheet 760.53
		X X	nos of segments
			results from ME
		X	spec. glass types
			glass type
			DIN-bolts, -nuts
		A	ANSI-bolts, -nuts
			DIN/ASME
		X 7, A - D	depends on design pressure
			gauge body
			orientation gauge valve

Phönix Control Kft.

Bolyki Tamás street 44.

Ozd, 3600, Hungary

Tel.: +36-48-572-310

+36-48-572-567

Fax.: +36-48-471-642

E-mail: info@phoenix-brv.hu

web: www.phoenixcontrol.hu